

DESCRIPTION

The subjects will comprise a detached commercial building of block construction beneath a pitched roof clad in slate. Internally, the property will be split into four separate units which will be finished to developers shell.

LOCATION

The subjects are situated off the main A82 road in Drumnadrochit adjacent to the recently completed Drumnadrochit Health Centre. Drumnadrochit is a popular tourist village with a population of approximately 1,020 located on the shores of Loch Ness.

ACCOMMODATION

The subjects are proposed to provide 310.7 sq m (3,345 sq ft) comprising the following:

Ground Floor:

Suite 1 – 78.6 sq m (846 sq ft)

Suite 2 – 103.7 sq m (1,117 sq ft)

First floor:

Suite 3 – 62.1 sq m (668 sq ft)

Suite 4 – 66.3 sq m (714 sq ft)

SERVICES

The property will have connections to mains water, drainage and electricity.

RATES

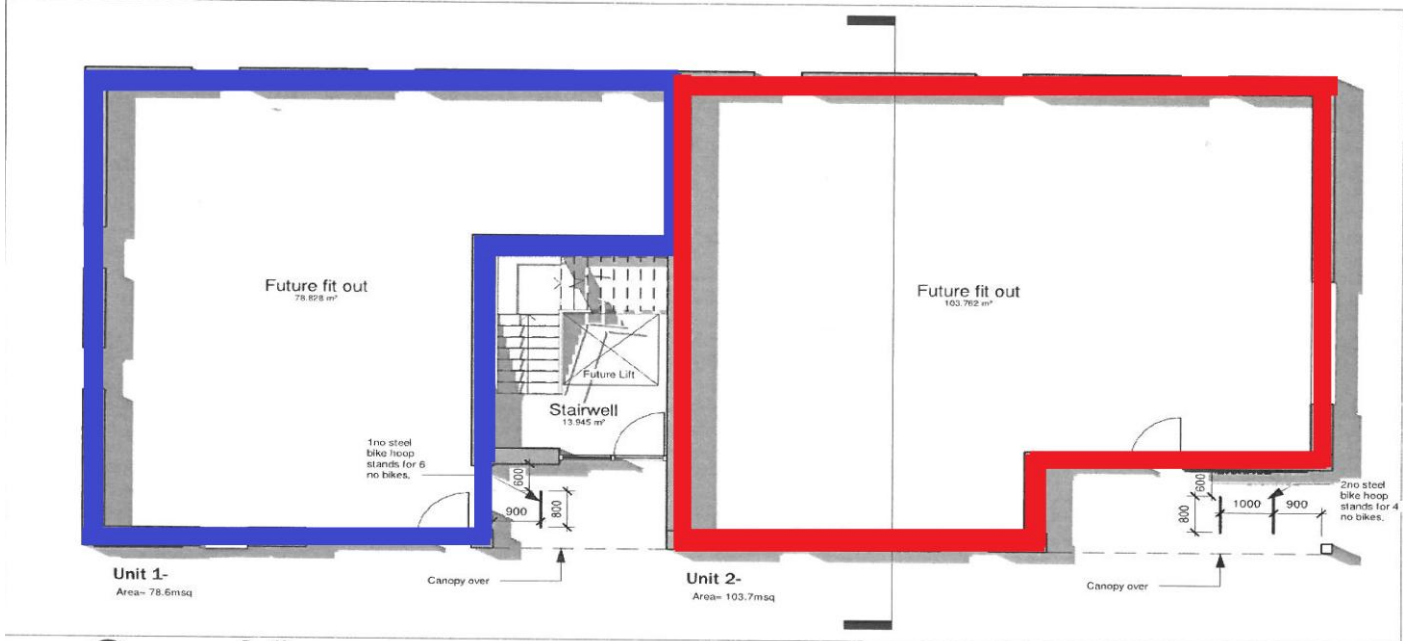
The subjects require to be assessed prior to occupation.

LEASE TERMS

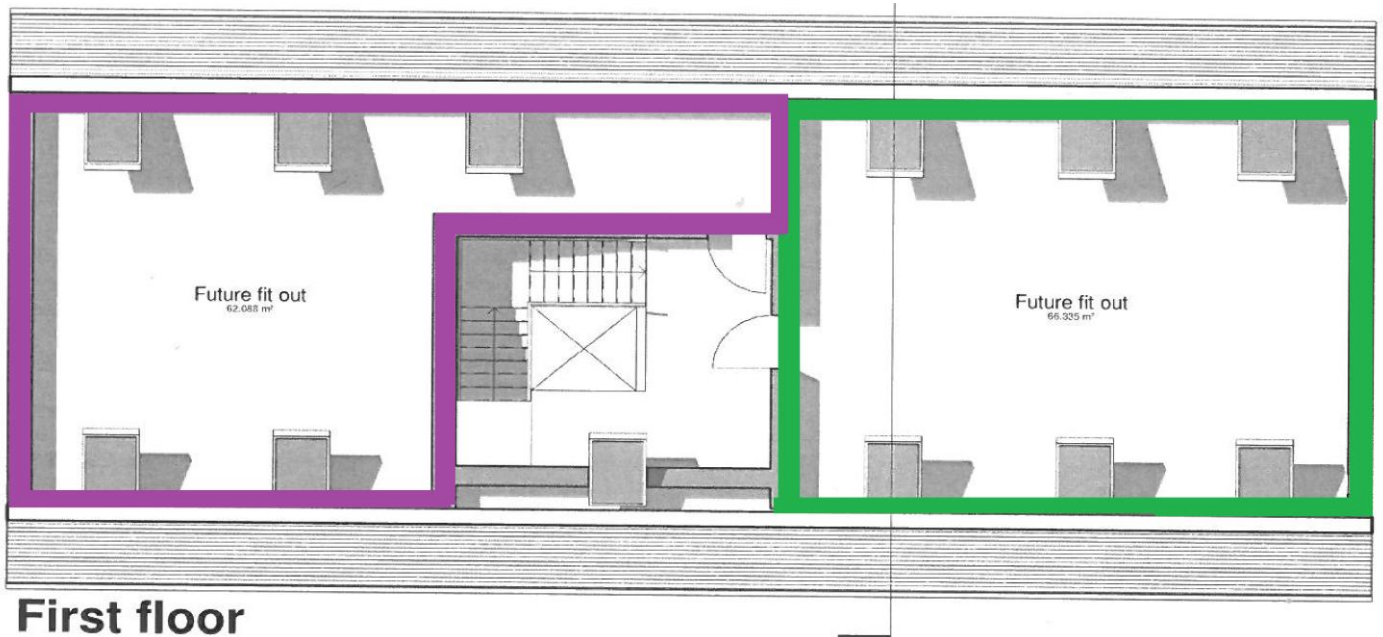
A new lease is offered on Full Repairing and Insuring Terms. Entry to be mutually agreed.



PROPOSED FLOOR PLANS



Ground floor



First floor

VIEWING AND FURTHER INFORMATION

Strictly through Andy Gray/Cydney Risko at the letting agents Allied Surveyors Scotland.

Lyle House
Fairways Business Park
INVERNESS

IV2 6AA

T: 01463 239 494

Email: Andy.gray@alliedsurveyorsscotland.com

Email: cydney.risko@alliedsurveyorsscotland.com